

PCB Assembly

- High mix/low-mid volume production
- Rigid, rigid-flex, and flex PCBs
- IPC/J STD (guidance, certs, processes)
- JUKI placement platforms
- Nitrogen ready reflow ovens
- M.O.L.E. profiling
- Inline solder paste inspection
- BGA, uBGA, passive component placement down to 01005
- Selective Soldering through-hole components
- AOI (Automatic Optical Inspection)
- No clean lead-free/ROHS processes
- No clean lead processes available

Cable/Harness

- High mix/low-mid volume production
- Customized cable assemblies
- KOMAX wire processing crimp and seal insertion
- Wire-to-wire and wire-to-board cable assemblies
- Connectors and crimp terminals from industry leaders like Molex and TE
- Stocking common wire varieties of UL ratings
- Stock a range of jacketed cable types, including coaxial, flat ribbon, and multicolor

Special Processes

- Staking
- Potting
- Conformal Coating
- Point of Sale packaging
- Marine PCB options available

Box Build

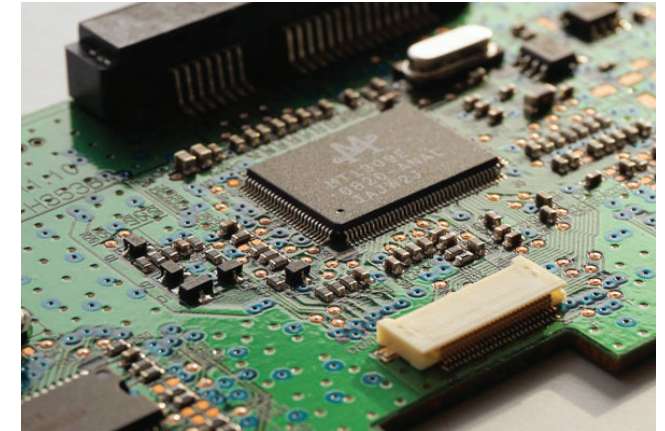
- FULL system integration and testing
- Electrical enclosure/box assembly
- Sub assemblies, PCA modules, cable harnesses
- Mechanical hardware integration

Supply Chain Management

- Real time fully integrated MRP system for incoming material and delivery tracking
- Factory Logix Industrial Software work instructions
- Epicor ERP system monitoring WIP tracking, data collection, and paperless routing
- Traceability of assemblies
- Long lead time material analysis
- Counterfeit part mitigation
- Alternative component recommendations
- Obsolescence forecasting, component cross referencing and life cycle parts management
- Commodity-based procurement team for push/pull situations

Partnerships

- Full metal fabrication
- Engineering to provide full service PCB design and layout
- Long standing strategic franchise distribution partners
- Powder coating service
- Pad printing service



Contact Us

- 📍 Louisville KY • 40299 • USA
- 📞 +1.502.495.5400
- 🌐 win2uit.com

Rick Smith
Eastern USA
502.495.5504
rksmith@win2uit.com

Donald Schaper
Western USA • International
502.541.6038
dschaper@winstonind.com



100% Turnkey Service

